

GENERAL

This alarm is a smoke detector of the photo cell principle. This means that the alarm checks the air for smoke resulting from fire. It does not detect heat, gas or fire. If the smoke detector is properly mounted and maintained it will sound an alarm in an early stage. In the event of a fire this can give you those extra seconds needed to vacate your home and call the fire brigade. The alarm is designed to detect smoke. It cannot prevent a fire. Read the instructions thoroughly before using the smoke detector.

BATTERIES /REPLACEMENT

The smoke detector works on one 9V DC battery. Normally the battery will last for at least one year under normal conditions of use. If the battery is empty or almost empty the smoke detector will indicate this with an audible "beep". This indicator sounds continually with intervals of 30-40 seconds for at least 7 days. Replace the battery when this indicator is given. Please use 9V alkaline DC batteries (type:6LR61 available from most department stores, DIY shops, electronic supply shops). Placing the battery is very simple: remove the mounting bracket on the backside and connect the battery.

MOUNTING

Where is the best place to place the smoke detectors?

- * at least 1 in each room
- * one on each floor
- * in the hallway, in the stairway,
- * in front of each bedroom door
- * in each bedroom (if you sleep with the door shut)
- * in the living room
- * in the storage room or spaces with electric equipment

Do not mount in:

- * a room in which the temperature can reach below 4°C and above 40°C
- * in damp spaces
- * just in front of doors or windows and not near a ventilator or radiator.

Do not mount the alarm in a place which is difficult to reach because of the test button, replacing the battery and other maintenance work.

The alarm can be mounted easily. Fix the base plate using the screws supplied onto the area you have chosen. Pay attention to the following instructions and drawings. Gently tighten the alarm onto the base plate. Mount the alarm in the centre of the ceiling of the room.

USE

The alarm is provided with a test button. Press this until the alarm signal sounds. The signal stops once the button is released. Test the alarm regularly, and certainly after replacing the battery or after cleaning, with a vacuum cleaner for example. The alarm must be vacuumed regularly to remove dust particles and to protect it as well as possible. The casing may not be opened during cleaning. If the alarm fails to operate correctly, please contact the seller or manufacturer.

IMPORTANT

Placing a smoke alarm is a part of your fire protection, just as fire extinguishers, emergency ladders, ropes, but also your choice in the use of building materials for renovation. Always ensure that there is an evacuation plan, discuss this with your children. Ensure that each room can be left without opening the door, e.g. by the window. If there is any question as to the cause of an alarm, it should be assumed that the alarm is due to an actual fire and the dwelling evacuated immediately.

NOTE

- * **The smoke detector may not be painted**
- * *Baruch Enterprises Ltd. is not liable for loss and / or damage of whatever nature, including incidental and / or other consequential loss, arising from the fact that the signal from the smoke alarm did not sound during smoke or fire. You must use this smoke detector according to the instructions in this manual for the best possible results.*

**KEEP SAFE
SMOKE DETECTORS
SAVE LIVES**



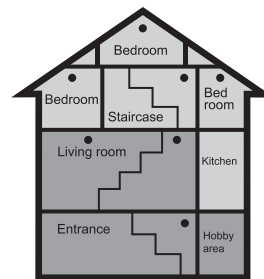
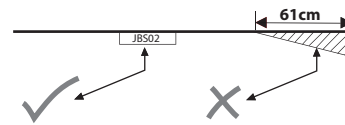
Product Code: **SMOUMX-JBS02**

Baruch Enterprises Ltd. London N18 2NG | Complies with BS-EN 14604:2005 | Conforms to EMC Regulations

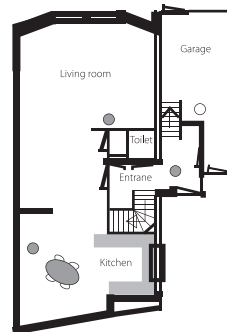
V1K10

ULTRA MAX® SMOKE DETECTOR

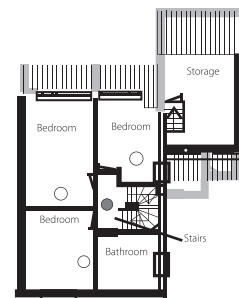
FAST RESPONSE PHOTOELECTRIC SENSING TECHNOLOGY



Recommended placing for the Smoke Alarm:
1 smoke detector on each floor.



● Smoke Alarm for minimal protection



○ Smoke Alarm for extra protection

GB